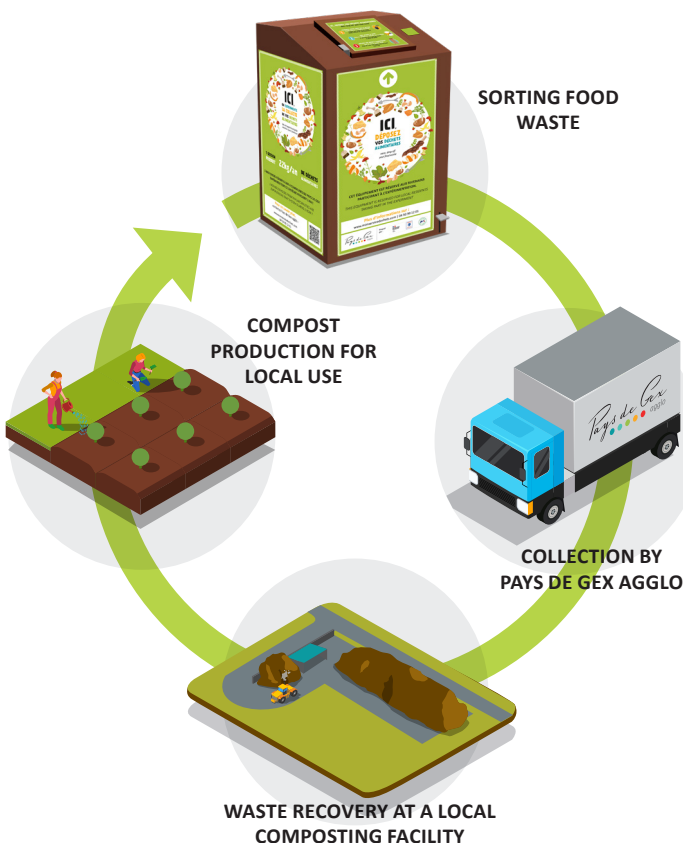


ONCE COLLECTED, WHAT HAPPENS TO YOUR FOOD WASTE?



Compost made from food waste is a soil amendment rich in organic matter that **improves soil fertility, retains water better** (less watering required), and contributes to plant growth.

TIPS AND ADVICE



When you run out of bags, you can get more from Pays de Gex agglo or reuse the paper bags available in stores when buying fruit and vegetables.



No plastic bags, even those labeled "compostable," and no packaging.



Keep the compost bin closed between uses to prevent flies from gathering. Rinse the compost bin regularly.



Dispose of your bag regularly in the collection bin near your home, **even if it is not full** (once or twice a week).

For more information:

www.mesdechets.paysdegex.fr
04 50 99 12 01
compostage@paysdegexagglo.fr



Pays de Gex
agglo

Funded by :



Pays de Gex
agglo



PRACTICAL GUIDE



FOOD WASTE COLLECTION

A quarter of our household waste consists of food waste. With no solution for composting it, it is incinerated even though it is more than 70% water!

Since 2023, Pays de Gex agglo has been offering food waste collection in certain densely populated neighborhoods.

With this new service, you will be able to sort your food waste and reduce the volume of your trash.

You have been given a kit consisting of a compost bin and 100 kraft paper bags.

The collection point for your food waste is located near your home. **It can be opened using your waste badge**, which was activated especially for you when you registered for the service.

Find the nearest collection bin!



SORTING YOUR FOOD WASTE HOW DOES IT WORK?



ALL FOOD WASTE IS ACCEPTED:

